



IACI QUARTERLY NEWSLETTER | EDITION 3.0 | APRIL 2021 | VISIT WWW.IACIIND.ORG

Friends,

It is our great pleasure to bring to you the next edition of 'Cardiac visions' - the IACI newsletter and we are ever grateful for the continued support of our readers.

We extend our gratitude to Dr Bhavin Jankharia for kindly writing to us about 'Life lessons learnt from COVID-19' and you can find this special featured article under the 'Soulful heart' section of this edition.

Put your thinking caps on and try to decipher the 'corner cases' and also an interesting 'Cardiac Imaging crossword puzzle'.

Discover the importance of 'splenic switch off sign' in adenosine stress cardiac MRI and also about the PANDA trial comparing dobutamine stress echocardiography versus CT coronary angiography, under the 'experts review' section of the newsletter.

Many questions about pre-TAVI imaging are answered in the 'Q and A' section and we have a comprehensive list of tips to improve cardiac MRI images in a patient with arrhythmia under the 'technologists corner' section of this edition.

As usual, we would really appreciate any feedback and also please do write to us on info@iaciind.org if you would like to become a part of the IACI newsletter team and contribute in any way.

Sending thoughts of health, peace, and good cheer!

Ashita Barthur, Priya Chudgar, and Apama Irodi
Editors, IACI newsletter

Featured Articles

Soulful Heart

Life Lessons Learnt from the Covid Pandemic

[Read more](#)



Experts Review

PANDA trial: A prospective observational study

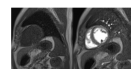
[Read more](#)



Experts Review

Value of Splenic Switch-Off sign in adenosine stress CMR

[Read more](#)



IACI Monthly Webinar Series

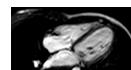
Second Friday of every month: 8.00pm – 9.30 pm

[REGISTER NOW](#)

Technologists Corners

Optimal Cardiac MR scanning techniques in patients with arrhythmia

[Read more](#)

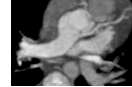


Thought for Your Heart

Holistic approach for a healthy heart
[Read more](#)



Corner Case
Case 1: CT [Read more](#)
Case 2: MR [Read more](#)



Q & A
Every Q has an A - FAQ for pre-TAVI
[Read more](#)



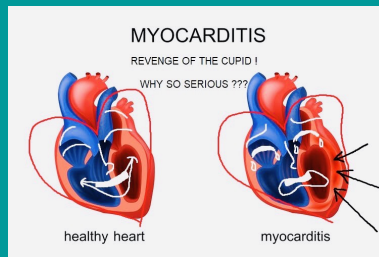
Missed Events
ACCESS NOW

Annual Conference | Monthly Webinars | Paediatric
Cardiac Imaging

Other Articles



Why so serious?



Copyright © 2021 IACI India, All rights reserved.

Our mailing address is:

IACI India
Citi Floor, Dr. S.S. Rao Road, Parel, Mumbai, India
Mumbai Maharashtra 400012
India
<https://www.iaciind.org/>,
info@iaciind.org

Want to change how you receive these emails?

You can update your preferences or unsubscribe from this list.